



TQ-ROBODRIVE

Customized Drives for Demanding Applications

Small, Lightweight, Powerful and Precise

Revolutionize Your Sector with Us

Invented for Space, Perfected for Industry

Our frameless servo kits establish unprecedented benchmarks in torque density, specifically engineered to excel in the most demanding space environments. Subsequently, we refined our frameless motor series to cater to applications in series production, prioritizing cost efficiency while empowering you to reimagine your product.

Key Features of our Frameless Drives



High rigidity



Frameless construction for high design flexibility



Excellent dynamic control and precision



Low maintenance costs



Enough space for cable integration



Scalability in performance and dimensioning



High torque density



Weight advantage



Pushing the Limits of Performance & Design

In Demanding Applications such as:



Robotics

- Cobots
- Humanoids
- Quadrupedal robots



Industrial Automation

- Laser measurement systems
- Rotary lifting modules
- Grinding machines
- Steering drives
- Precise positioning systems



Medical Technology

- Surgical robots
- Laboratory technology & Analysis
- Exoskeletons



Aerospace

- Rovers
- Robotic arms
- Aircraft flaps and seat adjustments
- Unmanned aerial vehicles (UAVs)

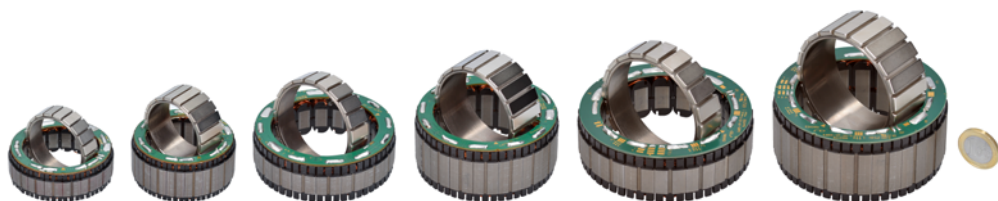
Discover Our Compact Frameless Servo Kits with Maximum Torque Density

Explore our Extensive Portfolio

- Diameter D [mm] from 25 – 115
- Length L [mm] from 10.8 – 68
- Max Power [W] from 70 – 618
- Rated torque T_r [Nm] 0.032 – 9.51
- Peak torque T_{max} at 20% deviation from linearity [Nm] 0.105 – 31.4
- Weight m [g] 16 – 2,170
- Max rotation speed n_{max} at U_r [rpm] up to 24,000



For more information
check out our data
sheets here!



Rethink Your Product with Maximum Design Freedom

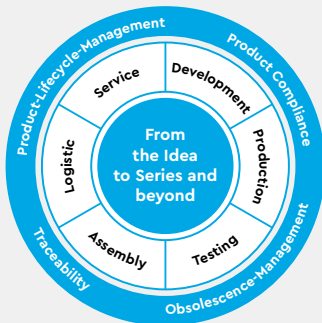
We realize an integrated solution tailored to your application and enable previously unthinkable product improvements.



From the motor to the fully integrated drive system - all from a single source

Your Dynamic Partner for Comprehensive Solutions

From Concept to Series Production



- As a family-owned business with 30 years of experience in Electronic Engineering Manufacturing Services, we offer comprehensive solutions and services from a single source.
- As technology leader in compact frameless motors, we provide unmatched, market-leading torque density with minimal thermal losses.
- By integrating all drive system components directly into your design, you save valuable space and weight enabling previously unthinkable news designs and product improvements.



Your Contact at TQ-RoboDrive



EUROPE

Robert Vogel

TQ-Drives Sales

☎ +49 176 10930915

✉ robert.vogel@tq-group.com



U.S.

David Hastings

TQ-Drives Sales

☎ +1 757 4102122-220

✉ david.hastings@tq-group.com



**Request a free design
check from our experts at
TQ-RoboDrive now!**

www.tq-group.com/en/roboDrive